

# All You Need is Life.



 **Trojan**<sup>®</sup>  
BATTERY COMPANY

[www.trojanbattery.com](http://www.trojanbattery.com) | +1 562-236-3000



**Do your AGM batteries deliver the battery life you expect?** Do they power the daily operational tasks you rely on them for? We all know that power disruptions add up to either costly downtime, or cut into valuable recreational time.

If long life and reliable performance are what you need, look no further. With Trojan's Reliant™ AGM batteries, you can now experience Extraordinary Quality, Life and Support – all in a maintenance-free solution.



Reliant AGM Provides *True* Deep-Cycle Performance and Maximum Total Energy



C-Max Technology Delivers the Maximum Total Energy Output in AGM Technology



Manufactured in Sandersville, Georgia to the Exacting Standards Trojan Battery is Known for

Trojan's Reliant AGM maintenance-free batteries can eliminate downtime and increase your return on investment. With a durable design capable of delivering deep-cycle performance, an extraordinary cycle life, and superior support, you will experience the exceptional Made in the USA quality that Trojan Batteries are known for.

## Reliant AGM - All You Need is Life!



## Reliant AGM is Designed for Key Markets and Applications



### KEY CUSTOMER MARKETS

- FLOOR MACHINE
- AERIAL WORK PLATFORM/ACCESS
- MATERIAL HANDLING
- MARINE
- TINY HOUSE
- OIL & GAS
- TRANSPORTATION
- GOLF/EV

### FOCUSED APPLICATIONS

- HOSPITALS
- AIRPORTS
- UNIVERSITIES/SCHOOLS
- LEED FACILITIES
- MUSEUMS
- SHOPPING FACILITIES
- SPORT VENUES
- RESIDENTIAL

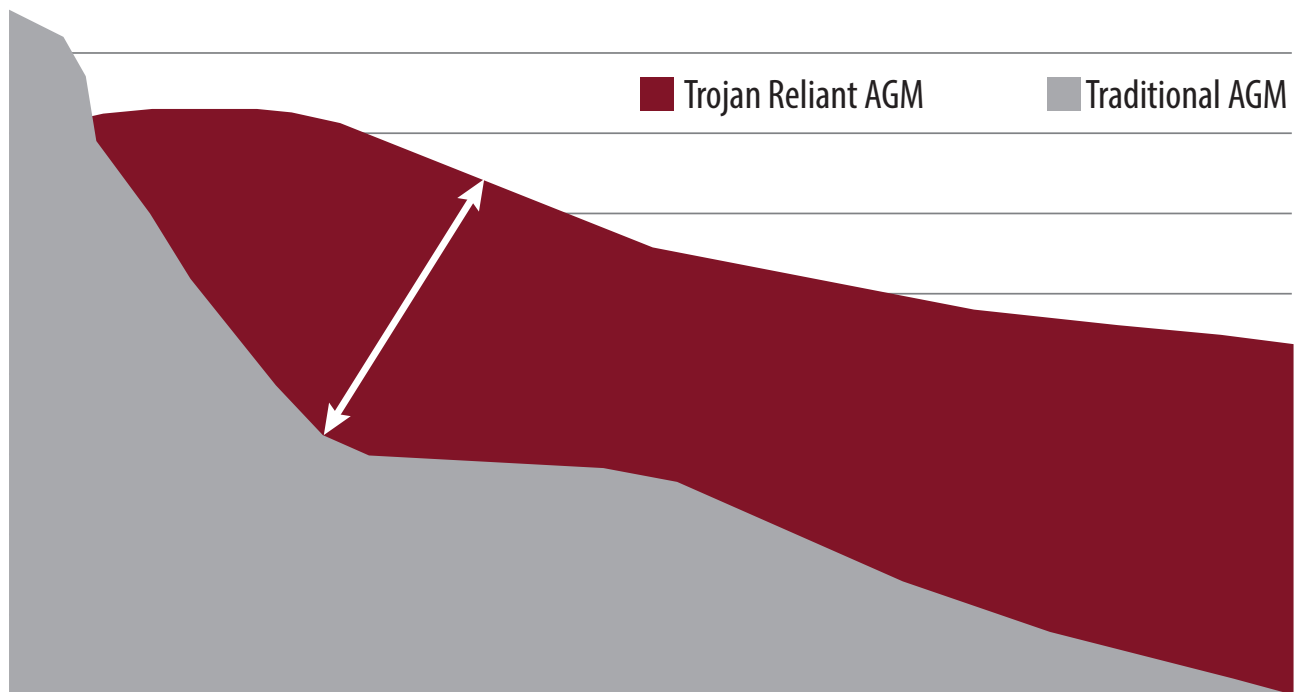


Reliant's unique **C-Max Technology** incorporates a wide range of features not found in many of today's AGM battery offerings. **These combined elements deliver increased total energy output, maximized sustained performance, consistent quality, and enhanced durability.**

- ▶ **PROPRIETARY PASTE MAXIMIZES SUSTAINED PERFORMANCE AND INCREASES TOTAL ENERGY**
- ▶ **THE UNIQUE SEPARATOR PROTECTS AGAINST STRATIFICATION AND EXTENDS BATTERY LIFE**
- ▶ **THE PLASTIC POLYMER CASE INCREASES DURABILITY AND PROVIDES HIGHER BATTERY CELL COMPRESSION TO ENSURE RELIABLE PERFORMANCE**
- ▶ **FLAME ARRESTORS PROVIDE MAXIMUM BATTERY SAFETY**
- ▶ **MANUFACTURING EXCELLENCE DELIVERS CONSISTENT BATTERY QUALITY FOR DEPENDABLE BATTERY FUNCTIONALITY IN DEEP-CYCLE AGM APPLICATIONS**

## Trojan Reliant AGM Focuses on Sustained Performance

versus Competitors' Focus on High Peak Capacity



# Product Specifications

BCI GROUP SIZE	PRODUCT NAME	CAPACITY <sup>A</sup> Minutes			CRANKING Performance		CAPACITY <sup>B</sup> Amp-Hours (Ah)				ENERGY (kWh)	TERMINAL Type <sup>G</sup>	DIMENSIONS <sup>C</sup> INCHES (mm)			WEIGHT lbs. (kg) <sup>H</sup>
		@25 Amps	@56 Amps	@75 Amps	C.C.A. <sup>D</sup> @ 0° F	C.A. <sup>E</sup> @ 32° F	RATE						100-Hr Rate	Length	Width	
							5-Hr	10-Hr	20-Hr	100-Hr						
<b>6 VOLT RELIANT™ DEEP-CYCLE AGM BATTERIES WITH C-MAX TECHNOLOGY™</b>																
GC2	<b>T105-AGM</b>	440	-	115	-	-	171	187	217	230	1.38	5, 8, 15	10.30 (262)	7.06 (179)	10.73 (273)	68 (31)
902	<b>J305-AGM</b>	670	-	185	-	-	250	273	310	329	1.97	5, 6, 15	11.66 (296)	6.94 (176)	14.09 (358)	95 (43)
903	<b>L16-AGM</b>	817	-	215	-	-	290	323	370	392	2.35	5, 6, 15	11.66 (296)	6.94 (176)	16.41 (417)	114 (52)
<b>8 VOLT RELIANT™ DEEP-CYCLE AGM BATTERY WITH C-MAX TECHNOLOGY™</b>																
GC8	<b>T875-AGM</b>	320	118	-	-	-	130	142	160	170	1.36	5, 8, 15	10.30 (262)	7.06 (179)	10.73 (273)	70 (32)
<b>12 VOLT RELIANT™ DEEP-CYCLE AGM BATTERY WITH C-MAX TECHNOLOGY™</b>																
921	<b>J185-AGM</b>	389	-	110	-	-	157	171	200	212	2.54	5, 6, 15	14.97 (380)	6.94 (176)	14.45 (367)	131 (59)

- A. The number of minutes a battery can deliver when discharged at a constant rate at 80°F (27°C) and maintain a voltage above 1.75 V/cell. Capacities are based on peak performance.  
 B. The amount of amp-hours (Ah) a battery can deliver when discharged at a constant rate at 80°F (27°C) for the 20-Hour rate and 86°F (30°C) for the 5-Hour rate and maintain a voltage above 1.75 V/cell. Capacities are based on peak performance.  
 C. Dimensions may vary depending on type of handle or terminal. Batteries to be mounted with .5 inches (12.7mm) spacing minimum.  
 D. C.C.A. (Cold Cranking Amps) - the discharge load in amperes which a new, fully charged battery can maintain for 30 seconds at 0°F at a voltage above 1.2 V/cell.  
 E. C.A. (Cranking Amps) - the discharge load in amperes which a new, fully charged battery can maintain for 30 seconds at 32°F at a voltage above 1.2 V/cell. This is sometimes referred to as marine cranking amps @ 32°F or M.C.A. @ 32°F.  
 F. Height taken from bottom of the battery to the highest point on the battery. Heights may vary depending on type of terminal.  
 G. Terminal images are representative only.  
 H. Weight may vary.

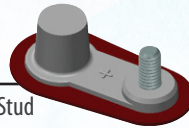
Trojan's battery testing procedures adhere to both BCI and IEC test standards.

## Terminals<sup>G</sup>

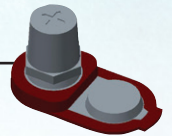
**5** LT  
L- Terminal



**6** DT  
Automotive Post & Stud



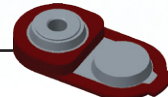
**8** AP  
Automotive Post



**11** ST  
Stud



**15** M6 / M8  
6mm / 8mm Insert



### Environmental Stewardship

At Trojan Battery, when we say, "Clean energy for life™," we mean every word. As proactive supporters of environmental sustainability, our environmental stewardship focuses on clean energy initiatives and recycling programs.

- Trojan batteries are 97% recyclable. The container plastic, battery lead and electrolyte from old deep-cycle batteries can be recycled to produce new deep-cycle batteries.
- Through its partnership with Southern California Edison (SCE) Trojan saves over 8 million kilowatt hours and cuts CO2 emissions by over 12 million pounds significantly reducing our annual energy consumption and carbon foot print.



**TROJAN BATTERY COMPANY WITH QUALITY SYSTEM CERTIFIED BY DNV = ISO 9001:2008 =**



### COMPLIES WITH BCIS-21 (DOT/IATA)

- NOT RESTRICTED FOR SURFACE TRANSPORT
- CLASSIFIED AS NON-HAZARDOUS MATERIAL PER DOT 49 CFR 173.159



Your Local Trojan Battery Representative:

**For more information, call 800.423.6569 or + 1.562.236.3000 or visit www.trojanbattery.com**

